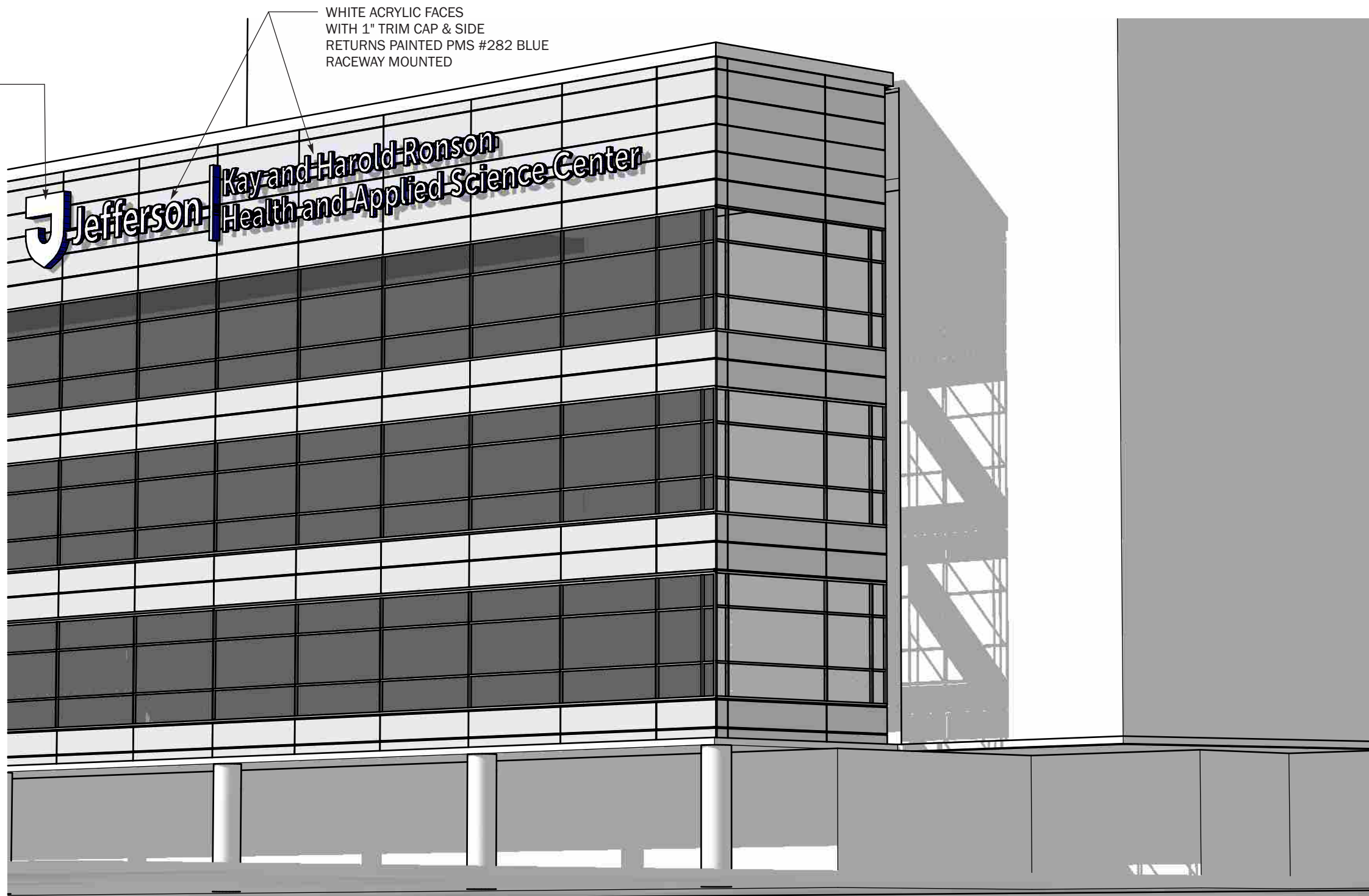


# PRELIMINARY

LOGO SHIELD: WHITE ACRYLIC FACES  
WITH 1" RETAINER PAINTED  
PMS #282 BLUE

WHITE ACRYLIC FACES  
WITH 1" TRIM CAP & SIDE  
RETURNS PAINTED PMS #282 BLUE  
RACEWAY MOUNTED



SHOP DRAWINGS

302 Commerce Drive  
Exton PA 19341  
USA  
www.agsinfo.com




610.363.8150 **Telephone**

610.363.7029 **Facsimile**

info@agsinfo.com **E-mail**

**Notes:**  
Any party accepting this document does so in confidence and agrees that it shall not be duplicated, in whole or in part, nor disclose to others, without the written consent of the client. Reference copy list for copy / graphic specific to each sign location. Contractor shall verify all conditions on site and notify back with any variations from what is shown on the drawings before proceeding with fabrication.

**Revisions:**

-  A Added prelim mounting details to initial package TK 5/24/19
- 
- 

Approved  Revise and Resubmit

Approved as Noted

Approved/Reviewed By: \_\_\_\_\_

Date: \_\_\_\_\_



Ronson Hall Exterior Signage

Sign Type:  
**ELEVATIONS**

Drawn By: TPK Start Date: 04/24/2019

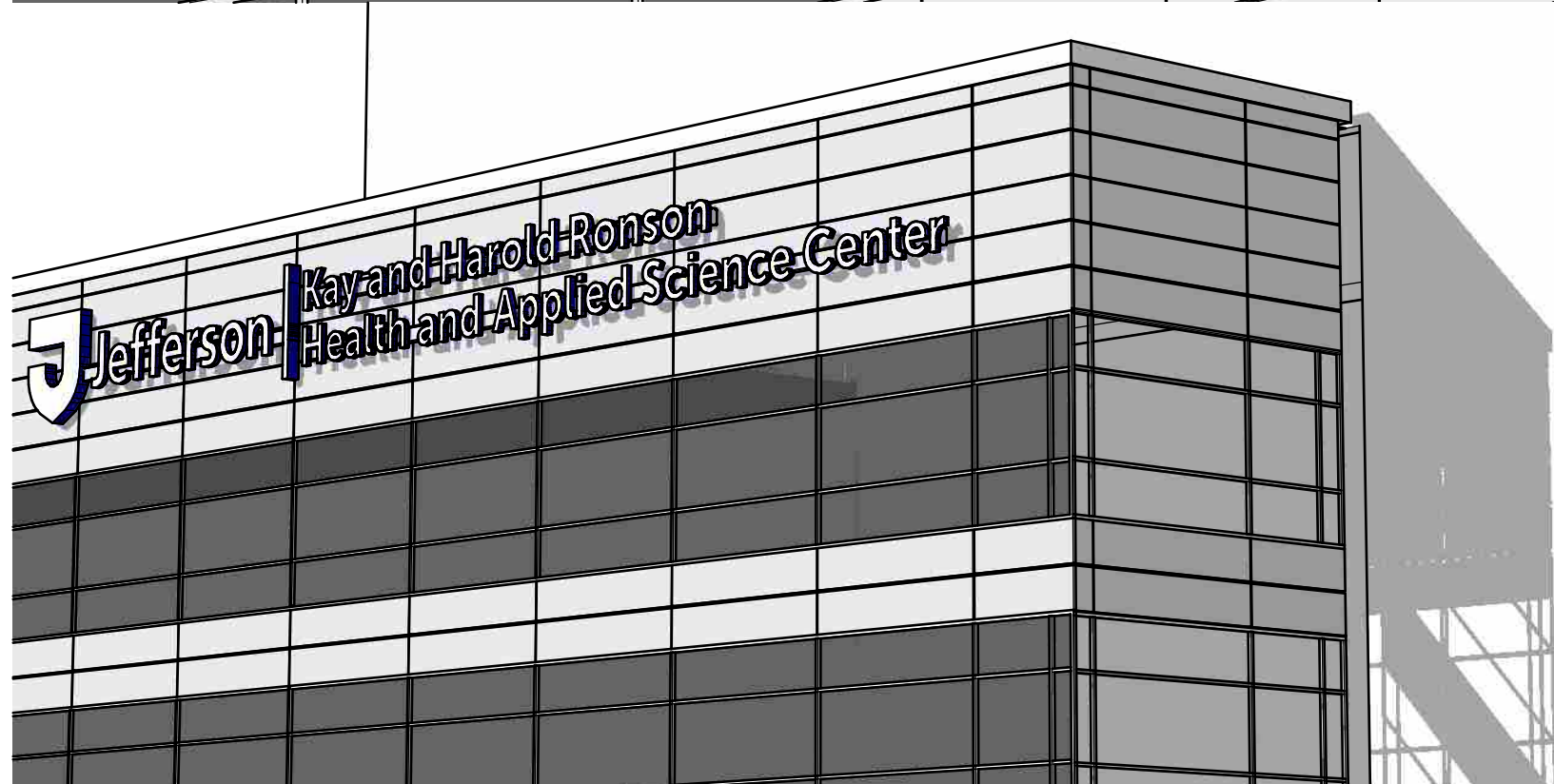
Project and Sheet Number:  
**673570.02.00**

# P R E L I M I N A R Y



LOGO & VERTICAL BAR  
MOUNTED DIRECTLY TO  
WALL PANEL SYSTEM

LETTERS MOUNTED TO  
RACEWAY




302 Commerce Drive  
Exton PA 19341  
USA  
www.agsinfo.com

610.363.8150 **Telephone**  
610.363.7029 **Facsimile**  
info@agsinfo.com **E-mail**

SHOP DRAWINGS

**Notes:**  
Any party accepting this document does so in confidence and agrees that it shall not be duplicated, in whole or in part, nor disclose to others, without the written consent of the client. Reference copy list for copy / graphic specific to each sign location. Contractor shall verify all conditions on site and notify back with any variations from what is shown on the drawings before proceeding with fabrication.

**Revisions:**

▲ Added prelim mounting details to initial package TK 5/24/19

Approved  Revise and Resubmit

Approved as Noted

Approved/Reviewed By: \_\_\_\_\_

Date: \_\_\_\_\_



**Jefferson**  
Philadelphia University +  
Thomas Jefferson University  
HOME OF SOREY KAMMEL MEDICAL COLLEGE

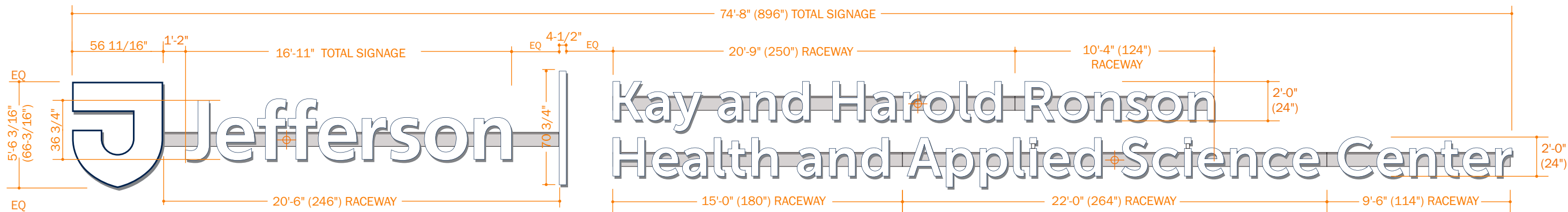
Ronson Hall Exterior Signage

Sign Type:  
**ELEVATIONS**

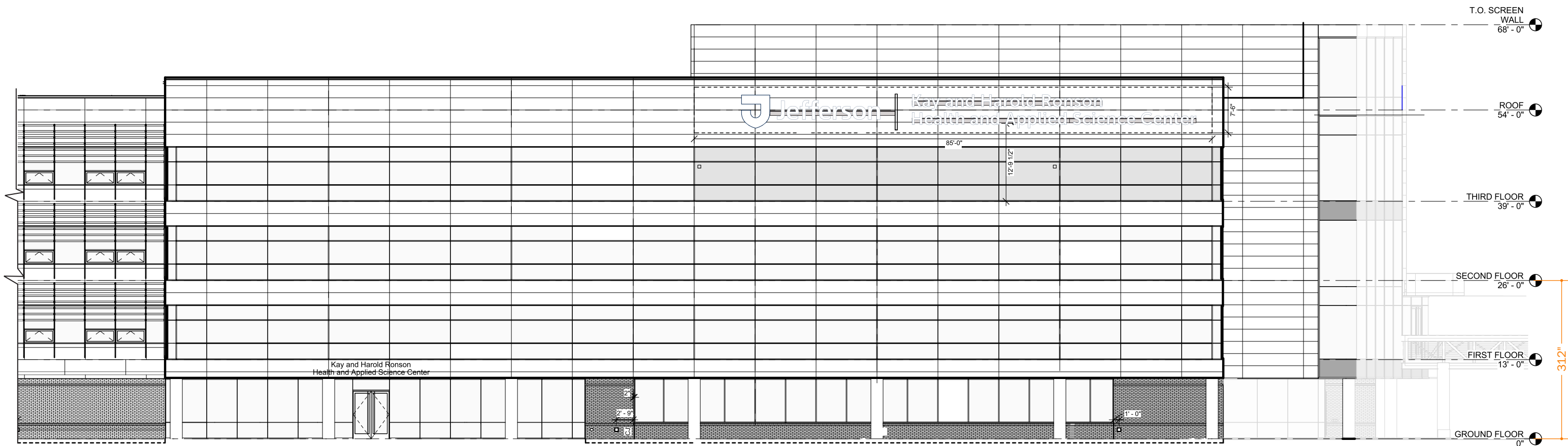
Drawn By: TPK Start Date: 04/24/2019

Project and Sheet Number:  
**673570.02.01**



# PRELIMINARY



**A** Sign Detail Elevation - Skyline  
Scale: 3/16" = 1'-0"

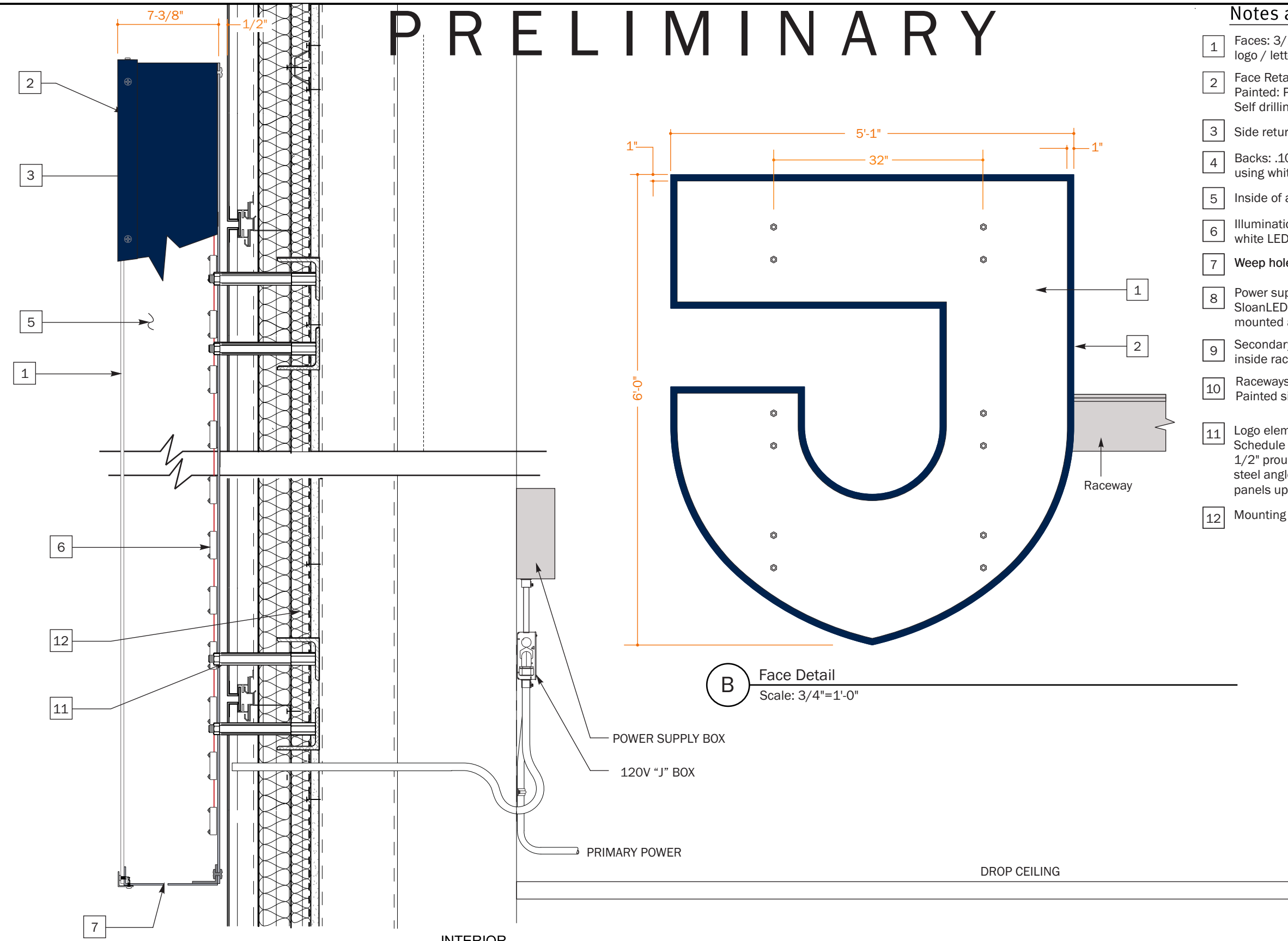


**B** Building Elevation - South  
Scale: 1/16" = 1'-0"

 <p>302 Commerce Drive Exton PA 19341 USA www.agsinfo.com</p> <p>610.363.8150 Telephone 610.363.7029 Facsimile info@agsinfo.com E-mail</p> <p>SHOP DRAWINGS</p>	<p>Notes: Any party accepting this document does so in confidence and agrees that it shall not be duplicated, in whole or in part, nor disclose to others, without the written consent of the client. Reference copy list for copy / graphic specific to each sign location. Contractor shall verify all conditions on site and notify back with any variations from what is shown on the drawings before proceeding with fabrication.</p>	<p>Revisions:</p> <p><b>A</b> Added prelim mounting details to initial package TK 5/24/19</p>	<input type="checkbox"/> Approved <input type="checkbox"/> Revise and Resubmit	 <p>Ronson Hall Exterior Signage</p>	<p>Sign Type: <b>SOUTH ELEVATION Signage</b></p>	Drawn By: TPK	Start Date: 04/24/2019
			<input type="checkbox"/> Approved as Noted			Project and Sheet Number: <b>673570.03.00</b>	
Approved/Reviewed By: _____ Date: _____							

# PRELIMINARY

## Notes and Specifications



- 1 Faces: 3/16" acrylic #2447 white mechanically fastened to logo / letter can TBD
- 2 Face Retainers: Fabricated 1" x 1-1/2" x 1/16" aluminum trim Painted: P1. Secure retainers to sign cans using 1/2" long #8 Self drilling screws with heads painted: TBD
- 3 Side returns: .040 thk aluminum painted: TBD
- 4 Backs: .100 thk aluminum riveted to side returns sealed inside using white caulk
- 5 Inside of all letters and logo elements to be white
- 6 Illumination: internal illumination using Everlyte 6500K white LED
- 7 Weep holes: 3/16" dia to allow moisture drain from sign can.
- 8 Power supplies: Convertible (120V / 277V) primary power supplies. SloanLED modular power supplies mounted in a raceway mounted as shown. Supply emergency dis-connect switch (visible)
- 9 Secondary Power: 12V Power leads to each letter. All wiring to be inside raceway
- 10 Raceways: Sign comp 8" Narrow Channel Letter Raceway Painted silver to match rain screen acm panels
- 11 Logo element mounted without a raceway. Schedule 40 steel pipe spacers to be provided by Building contractor 1/2" proud of exterior rain screen panel system, extending to steel angle provided by building contractor as to not crush rain screen panels upon tightening
- 12 Mounting elements: Per Mounting Detail "A" in this package

**A-A** Section Detail  
Scale: 1-1/2"=1'-0"

**B** Face Detail  
Scale: 3/4"=1'-0"

INTERIOR

**AGS**  
SHOP DRAWINGS

302 Commerce Drive  
Exton PA 19341  
USA  
www.agsinfo.com

610.363.8150 Telephone  
610.363.7029 Facsimile  
info@agsinfo.com E-mail

**Notes:**  
Any party accepting this document does so in confidence and agrees that it shall not be duplicated, in whole or in part, nor disclose to others, without the written consent of the client. Reference copy list for copy / graphic specific to each sign location. Contractor shall verify all conditions on site and notify back with any variations from what is shown on the drawings before proceeding with fabrication.

**Revisions:**

**A** Added prelim mounting details to initial package TK 5/24/19

Approved  Revise and Resubmit

Approved as Noted

Approved/Reviewed By: \_\_\_\_\_

Date: \_\_\_\_\_

**Jefferson**  
Philadelphia University +  
Thomas Jefferson University  
HOME OF SOREY KAMMEL MEDICAL COLLEGE

Ronson Hall Exterior Signage

Sign Type:  
**DETAILS**

Drawn By: TPK Start Date: 04/24/2019

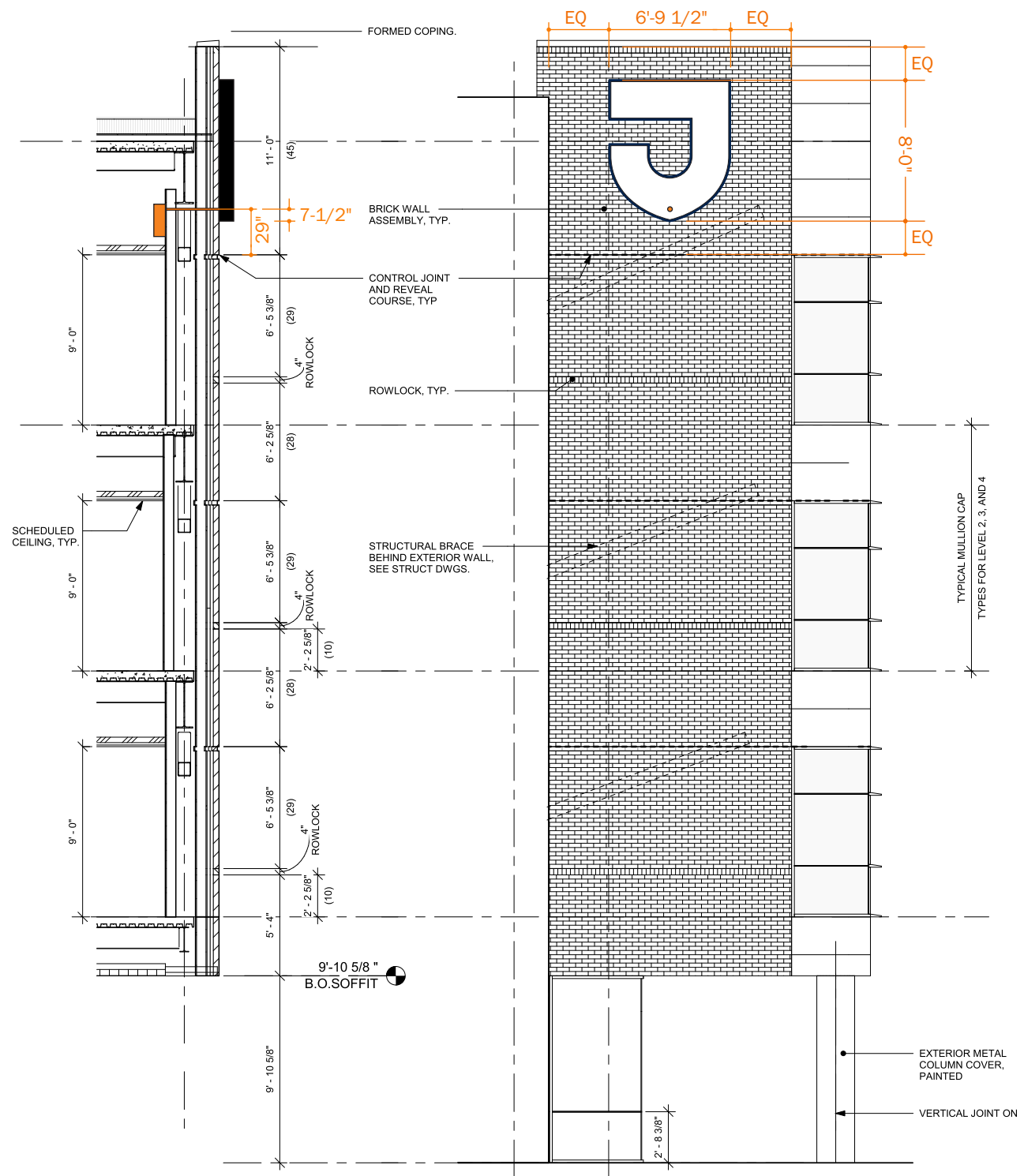
Project and Sheet Number:  
**673570.04.00**



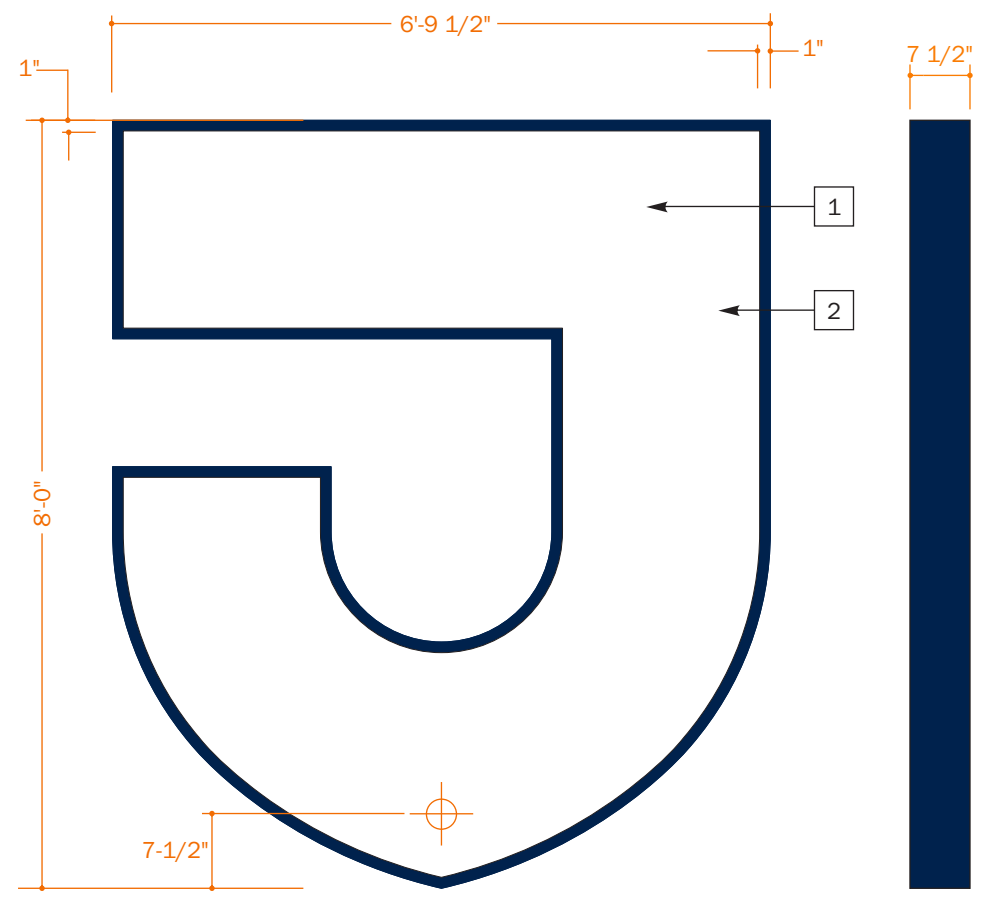
# PRELIMINARY

## Notes and Specifications

- 1 Faces: 3/16" white polycarbonate mechanically fastened to logo / letter can
- 2 Face Retainers: Fabricated 1" x 1-1/2" x 1/16" aluminum trim Painted: P1. Secure retainers to sign cans using 1/2" long #8 Self drilling screws with heads painted: P4
- 3 Side returns: .063 thk aluminum painted: TBD
- 4 Backs: .100 thk aluminum riveted to side returns sealed inside using white caulk
- 5 Inside of all letters and logo elements to be white
- 6 Illumination: internal illumination using everylite 6500K white LED
- 7 Weep holes: 3/16" dia to allow moisture drain from sign can.
- 8 Power supplies: Convertible (120V / 277V) primary power supplies. SloanLED modular power supplies mounted in a raceway mounted as shown. Supply emergency dis-connect switch (visible)
- 9 Secondary Power: 12V Power leads to each letter. All wiring to be inside raceway
- 10 Direct "flush" mount to brick wall surface
- 11 Mounting Hardware: Hilti 3/8" x 2" wedge expansion bolts



**A** Partial Elevation / Section - West  
Scale: 1/8" = 1'-0"



**B** Face Detail  
Scale: 3/4" = 1'-0"

**AGS**  
SHOP DRAWINGS

302 Commerce Drive  
Exton PA 19341  
USA  
www.agsinfo.com

610.363.8150 Telephone  
610.363.7029 Facsimile  
info@agsinfo.com E-mail

**Notes:**  
Any party accepting this document does so in confidence and agrees that it shall not be duplicated, in whole or in part, nor disclose to others, without the written consent of the client. Reference copy list for copy / graphic specific to each sign location. Contractor shall verify all conditions on site and notify back with any variations from what is shown on the drawings before proceeding with fabrication.

- Revisions:**
- A** Added prelim mounting details to initial package TK 5/24/19

Approved  Revise and Resubmit

Approved as Noted

Approved/Reviewed By: \_\_\_\_\_

Date: \_\_\_\_\_

**Jefferson**  
Philadelphia University +  
Thomas Jefferson University  
HOME OF SOREY KAMMEL MEDICAL COLLEGE

Ronson Hall Exterior Signage

Sign Type:  
**WEST ELEVATION**

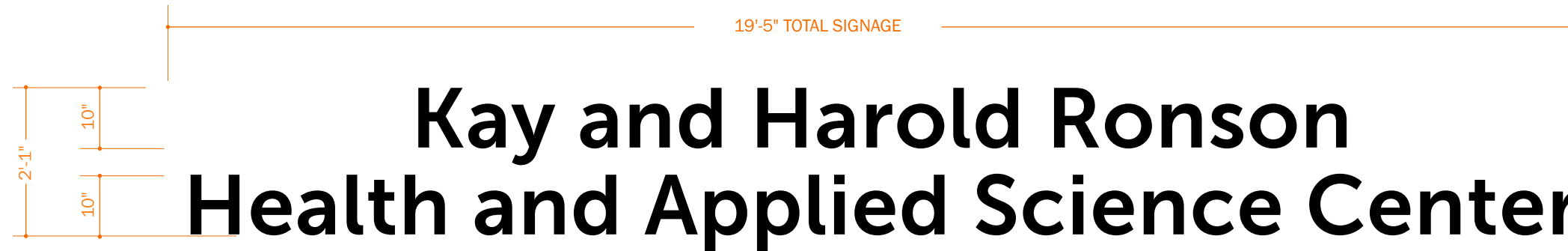
Drawn By: TPK Start Date: 04/24/2019

Project and Sheet Number:  
**673570.05.00**

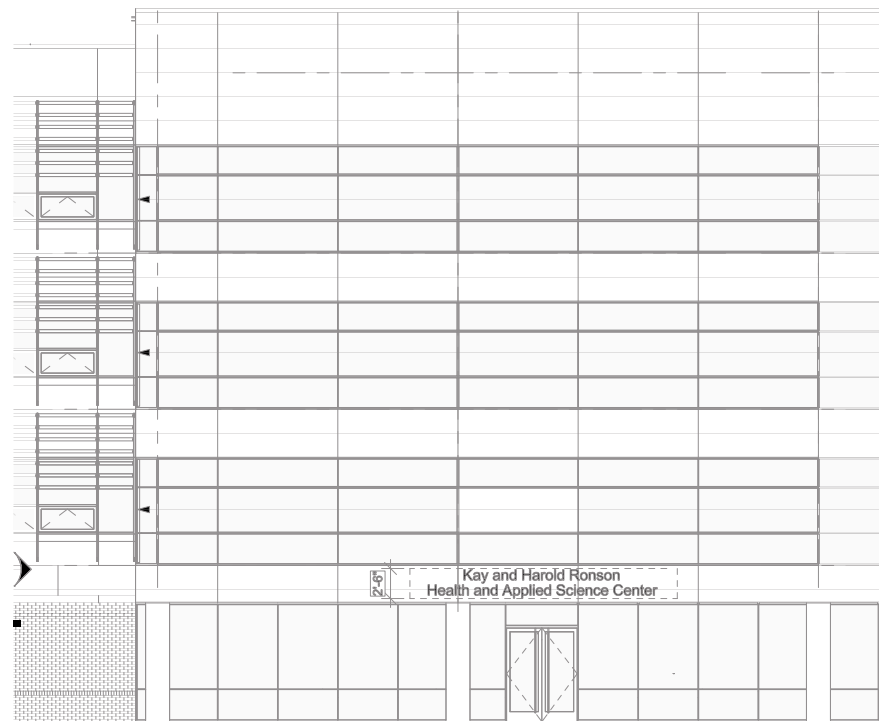
# PRELIMINARY

## Notes and Specifications

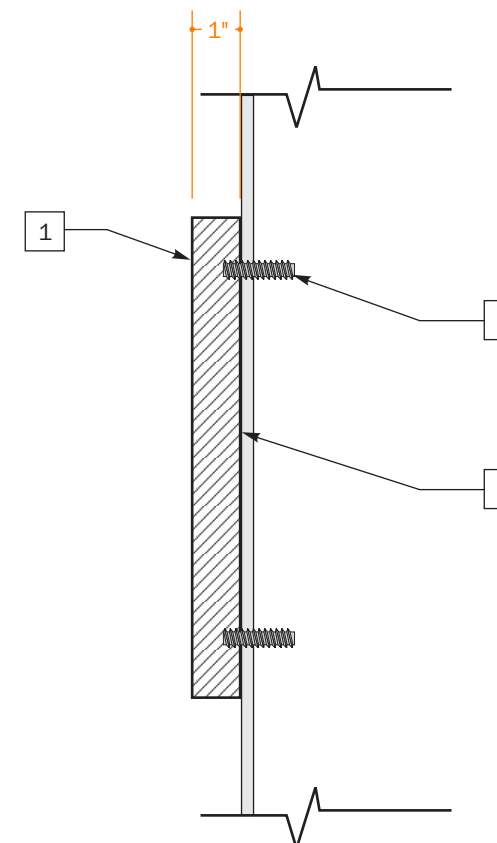
- 1 Flat Cut Letters: 1" THK acrylic painted: TBD
- 2 Mounting Studs: 3/4" long adhered into back
- 3 Silicone adhesive applied to back of letters



**A** FRONT VIEW  
Scale: 1/2"=1'-0"



**B** PARTIAL ELEVATION VIEW  
Scale: 1/16"=1'-0"

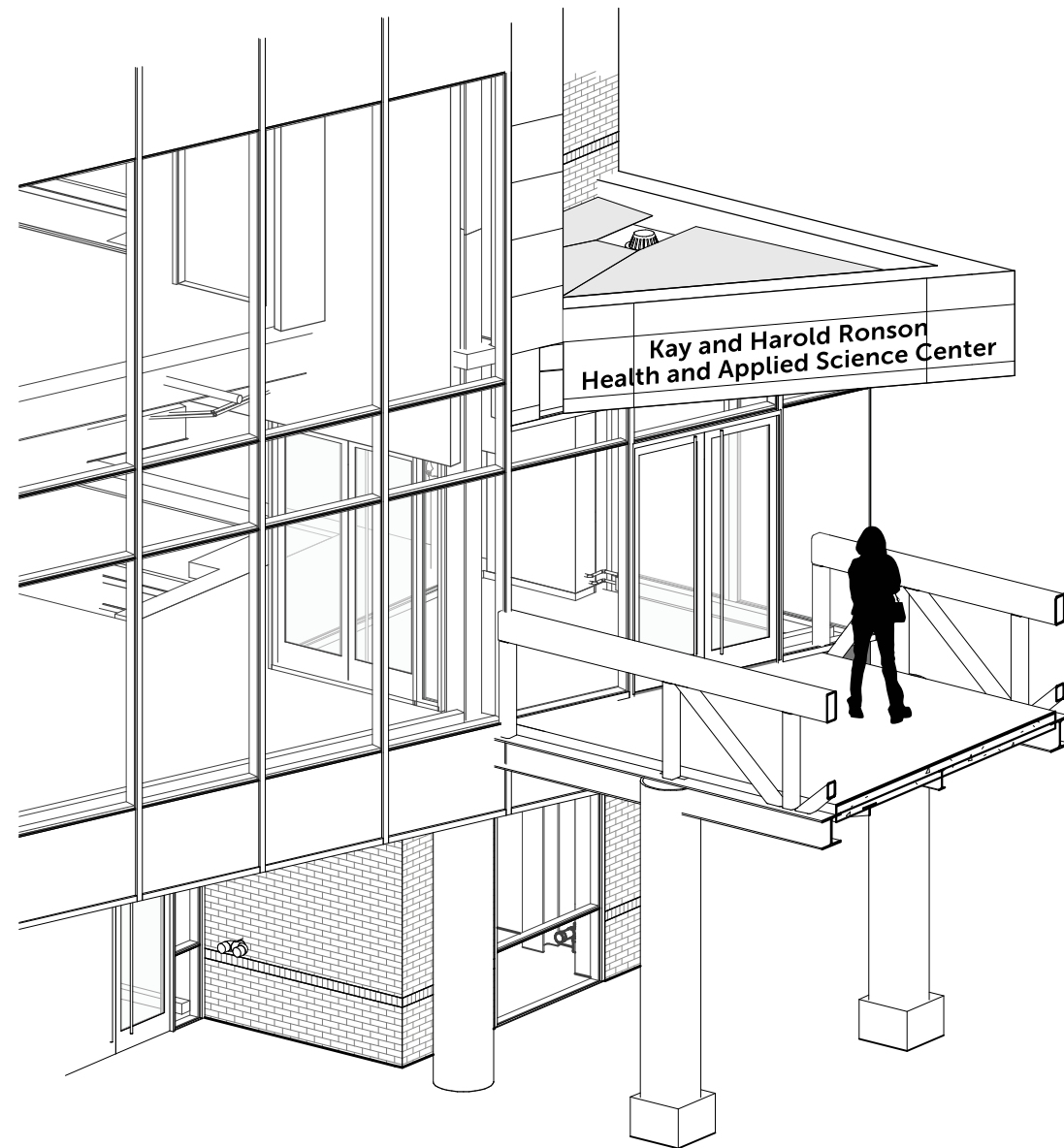


**C** DETAIL VIEW  
Scale: 1:4

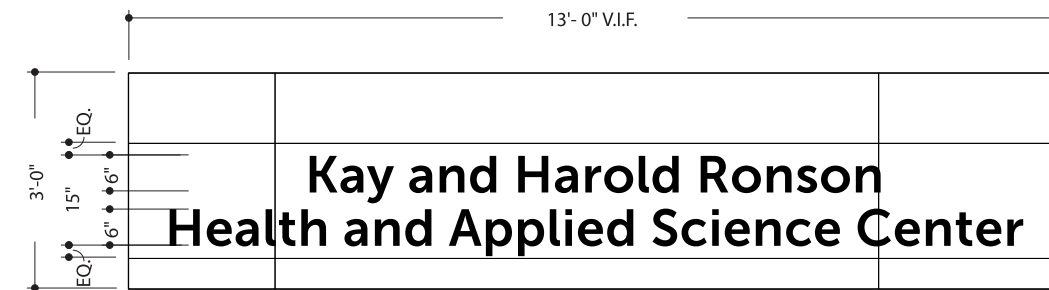
# PRELIMINARY

## Notes and Specifications

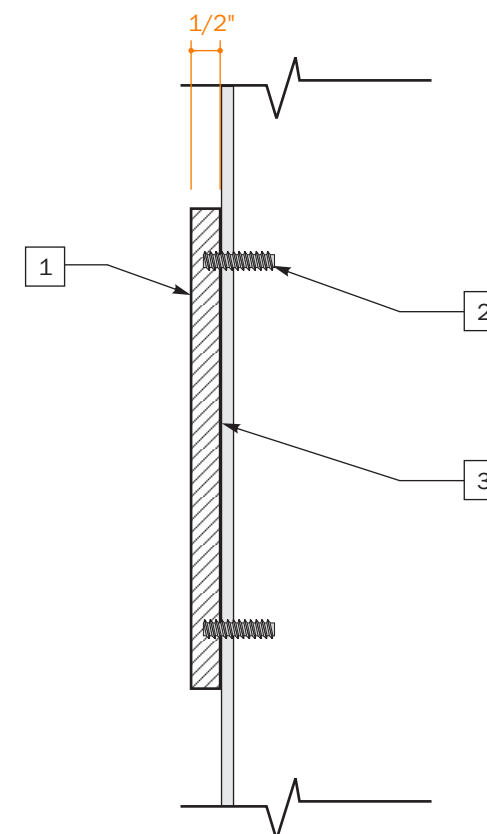
- 1 Flat Cut Letters: 1" THK acrylic painted: TBD
- 2 Mounting Studs: 3/4" long adhered into back
- 3 Silicone adhesive applied to back of letters



**A** Axon - East - Bridge Entrance Canopy  
Scale: 3/16" = 1'-0"



**B** Detail Elevation - East - Bridge Entrance Canopy  
Scale: 3/8" = 1'-0"



**C** DETAIL VIEW  
Scale: 1:4



SHOP DRAWINGS

302 Commerce Drive  
Exton PA 19341  
USA

610.363.8150 Telephone  
610.363.7029 Facsimile

info@agsinfo.com E-mail

**Notes:**  
Any party accepting this document does so in confidence and agrees that it shall not be duplicated, in whole or in part, nor disclose to others, without the written consent of the client. Reference copy list for copy / graphic specific to each sign location. Contractor shall verify all conditions on site and notify back with any variations from what is shown on the drawings before proceeding with fabrication.

**Revisions:**

- A Added prelim mounting details to initial package TK 5/24/19

Approved  Revise and Resubmit

Approved as Noted

Approved/Reviewed By: \_\_\_\_\_

Date: \_\_\_\_\_



Ronson Hall Exterior Signage

Sign Type:  
**DETAILS**

Drawn By: TPK Start Date: 04/24/2019

Project and Sheet Number:  
**673570.07.00**